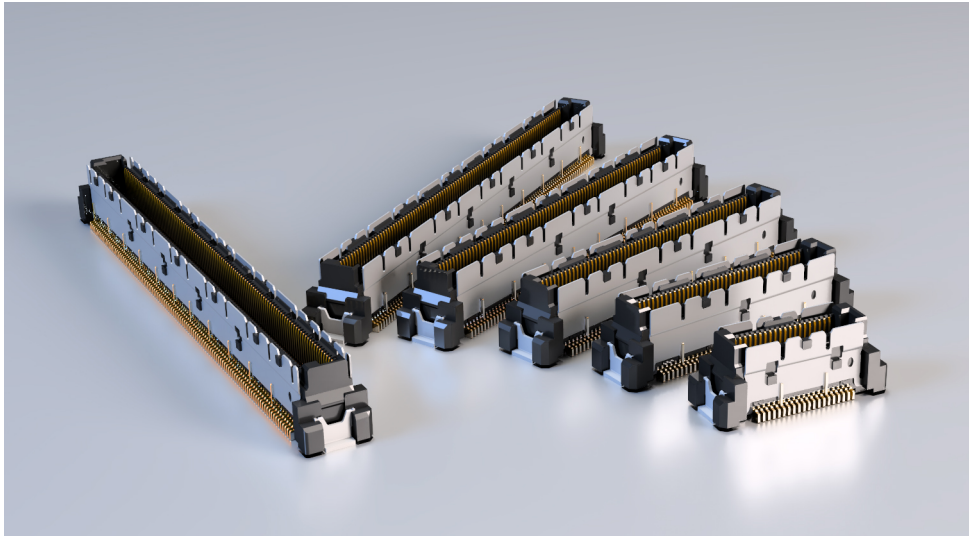
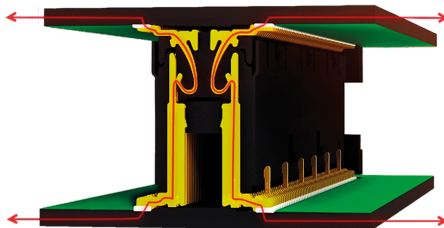


Maximum Flexibility with Data Transfer Rates of Up to 16 Gbps



The Colibri® 0.5 mm-pitch SMT connectors from ept have guaranteed reliable data transfer rates between printed circuit boards (PCB) for high-speed applications for years. Pin counts of 40, 80, 120, and 160 will be available for applications of up to 16 Gbps as of the 2020 embedded world. This gives developers maximum flexibility when designing hardware. They can choose pin counts ranging from 40 to 440 contacts and data transfer rates of up to 10 Gbps or 16 Gbps, in addition to the board-to-board distances of 5 mm and 8 mm.



Simulations with the optimized contact design of the Colibri® connector system at 16 Gbps demonstrate first-rate signal integrity, even at high data transfer rates.

The pin count versions, 220 and 440, have already proven their merit in COM Express applications in terms of performance and contact design over many years. What's more, they are compatible with connectors available on the market now. This has been proven by signal integrity tests. The testers compared Colibri® connectors to other COM Express connectors and also tested the two connector types in combination, achieving excellent results in each scenario. S-parameters and samples for use in simulating your proprietary designs are available on request from ept, free of charge.

Further information is available at www.ept.de/Colibri

Press Contact

ept GmbH • Wiebke Meyer • Bergwerkstr. 50 • 86971 Peiting, Germany • (+49-8861) 250-1340 • wiebke.meyer@ept.de