

# Cervoz Upgrades Next-Generation DDR4-2666 Memory



Supports Intel<sup>®</sup> Coffee Lake ,  
 AMD<sup>®</sup> Ryzen platforms for industrial applications

Artificial Intelligence (AI) and Internet of Things (IOT) accelerate convergence, the requirements for computing power and transmission speed are also increasing. Cervoz provides DDR4-2666 memory modules for industrial applications.

## Product Highlights



Complies with the JEDEC<sup>®</sup> standard



High-Performance, memory transfer rate up to 2666 MT/s, which is 11% higher than DDR4 -2400

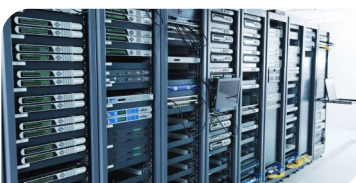


Support the latest Intel<sup>®</sup> Coffee Lake and AMD<sup>®</sup> Ryzen platforms



High-bandwidth and Lower power consumption

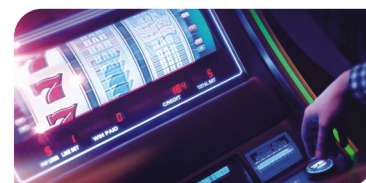
## Market Applications



Server



IOT



Information & Entertainment